

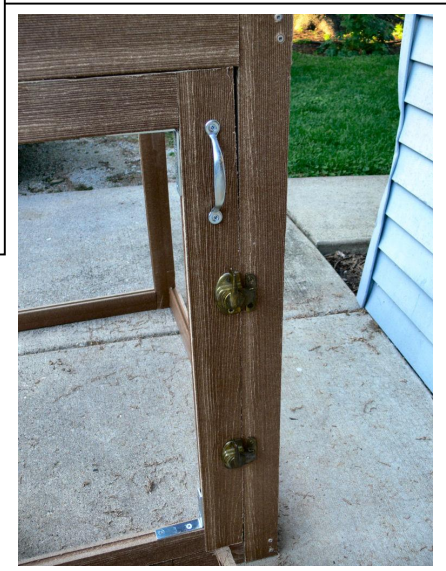
Directions to make an Outdoor Composter

This is a 3 foot square composter with 2 doors. It can be made from composite (PVC) board which will not rot like wood. Solid composite deck planking from Menards or Home Depot is suitable as a frame. It can be accessed from the top to add new material and from the side to occasionally mix the compost.



List of Materials

- 3 – 12' composite deck planks - \$77 from Menards
- 4 – Hinges - \$1 ea from Habitat Restore
- 2 – handles - \$1 ea from Habitat Restore
- 4 – window latches - \$1 ea from Habitat Restore
- 2- 2' chains - \$3 ea from Ace Hardware
- 2 – springs - \$1.50 ea from Ace Hardware
- 8 – right angle brackets – 50 cents ea from Habitat Restore
- 1- box of 70-100 hex head screw $\frac{3}{4}$ " long
- 1 – 1 lb. box of composite deck screws $1\frac{5}{8}$ "-Home Depot \$9.37
- 1 – 1 lb. box of composite deck screws 3" (with a counter sink) or 3.5" without. – Home Depot \$9.37
- 1 – Roll of $\frac{1}{4}$ " hardware cloth (3'x25') \$37 from Menards



The technical drawing illustrates the dimensions and components of a door assembly. It consists of three views: Top View with door, Side View with door, and Side View without door.

Top View with door: Shows the door's footprint. The overall width is 36" and the height is 36". The door opening is 34" wide and 29" high. The door is 2.5" thick. The hinge is located 1" from the top and bottom edges. The latch is located 2.5" from the top and bottom edges. The handle is located 2.5" from the top and bottom edges.

Side View with door: Shows the door's profile. The overall width is 36" and the height is 36". The door is 2.5" thick. The hinge is located 1" from the top and bottom edges. The latch is located 2.5" from the top and bottom edges. The handle is located 2.5" from the top and bottom edges.

Side View without door: Shows the door's profile without the door. The overall width is 36" and the height is 36". The door is 2.5" thick. The hinge is located 1" from the top and bottom edges. The latch is located 2.5" from the top and bottom edges. The handle is located 2.5" from the top and bottom edges.

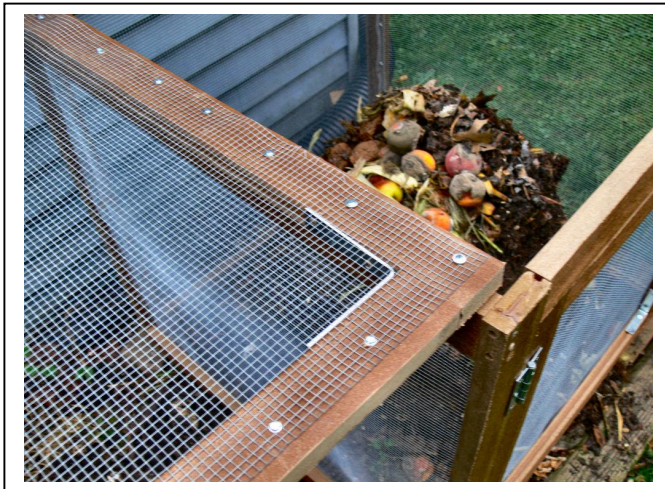
Components: The drawing includes labels for the Hinge, Latch, and Handle, indicating their positions on the door assembly.

Building Notes

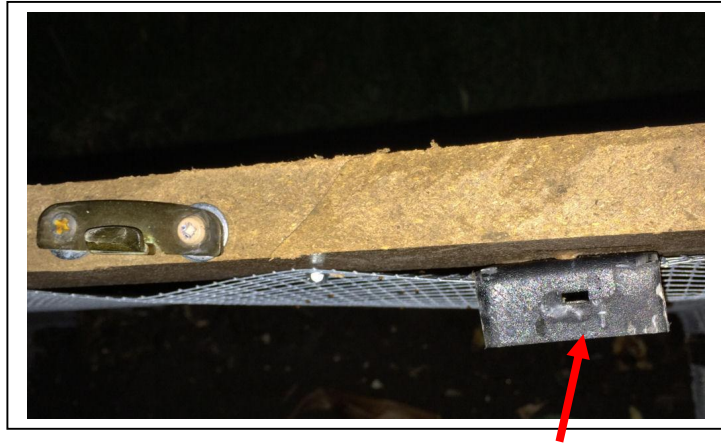
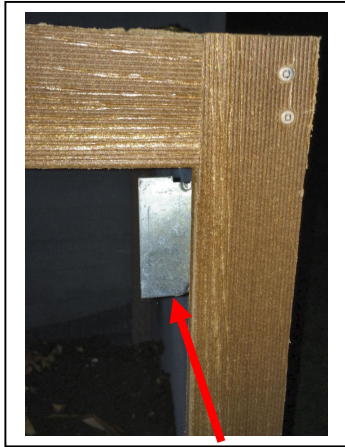
- The composite deck planking is slightly larger on the top side than the bottom. The 12' boards need to be trimmed until they are square, top and bottom.
- Each 12' x 5" board should be ripped making 2, 12' boards 2.5" wide
- The boards should be cut in the following lengths:
 - 4 boards – 36" x 2.5"
 - 6 boards - 34" x 2.5"
 - 6 boards – 31" x 2.5"
 - 2 boards 29" x 2.5"
 - 2 boards 26" x 2.5"
- If you purchased 3" deck screws, they must be counter sunk 1/2".
- If you purchase 3.5" deck screws, they do not need to be counter sunk.
- Use screws with a square bit or star bit to avoid stripping of the screws



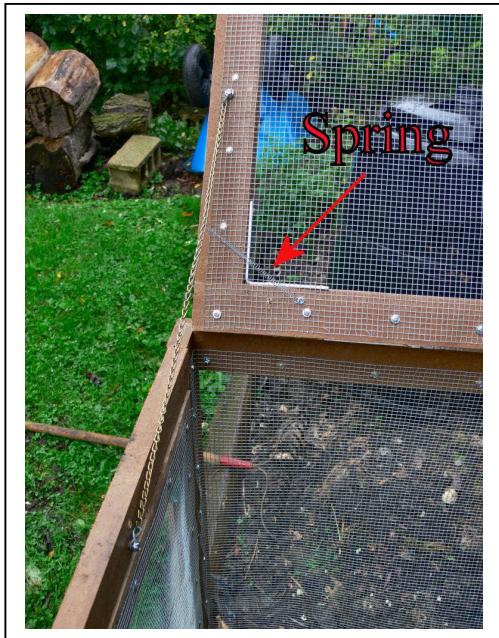
- Pre-drill the holes to avoid cracking the deck planking



- Attach 1/4" hardware cloth with wide head screws or hex head screws
- Attached right angle brackets to each of the inside corners of the doors to keep them square.
- Use two window latches to latch each door. This will also help keep the cube square



- It is helpful to make a metal door jamb. I used parts of an electrical outlet box from Habitat Restore. The side door jamb is flat. The top door jamb is a right angle.



Opened



Closing

- The top door needs extra support. Two chains were added so the door will only open 120 degrees.
- The chain can hang up as the door closes. A spring was added so the chain is pulled back as the door is opened and closed.

Write if you have questions.

Charles Reiss creiss(at)ameritech.net.